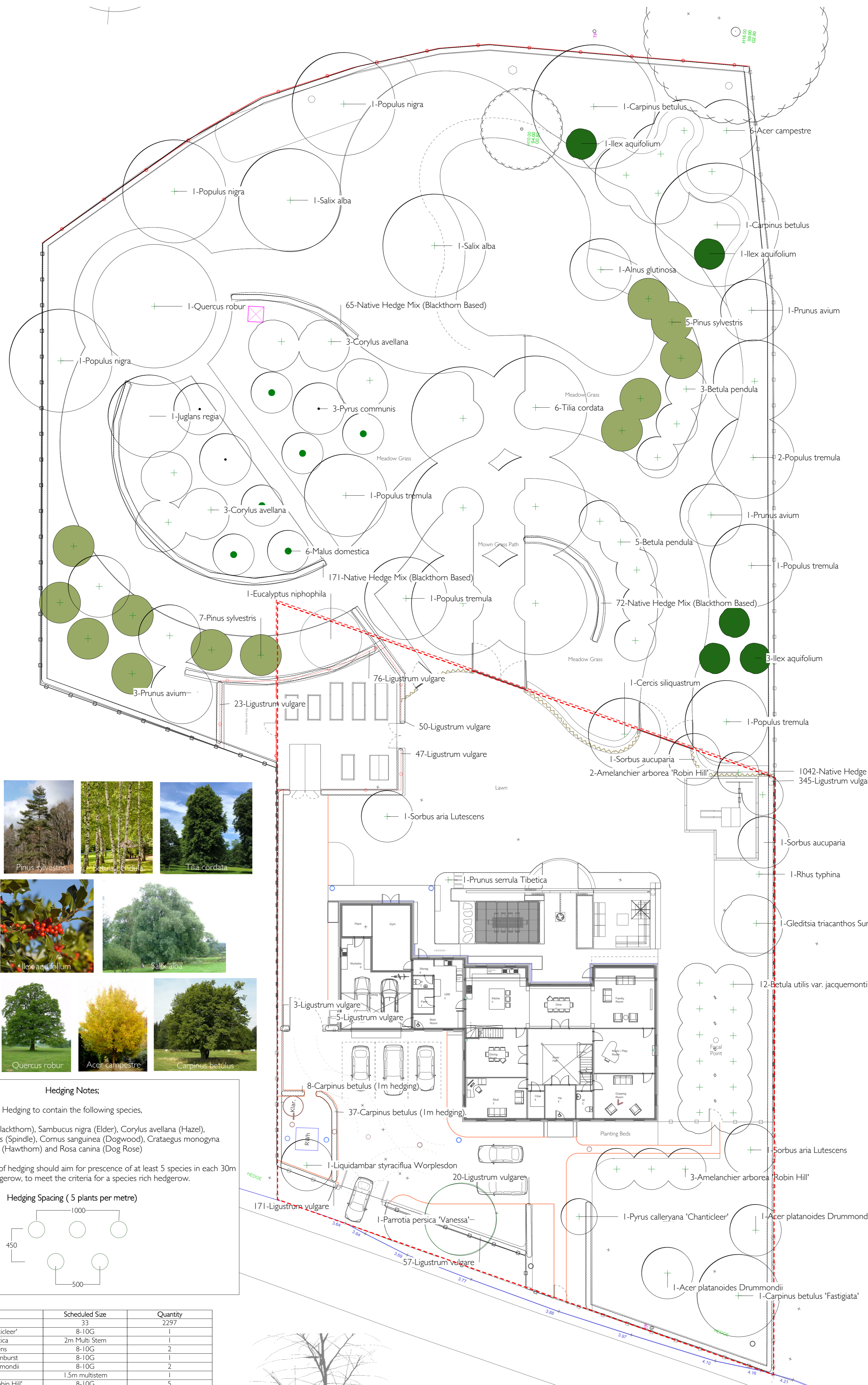


SCALE BAR



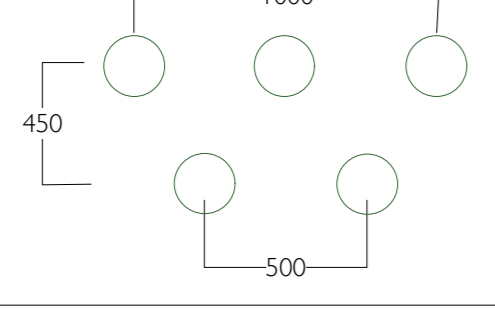
**Hedging Notes;**

Hedging to contain the following species.

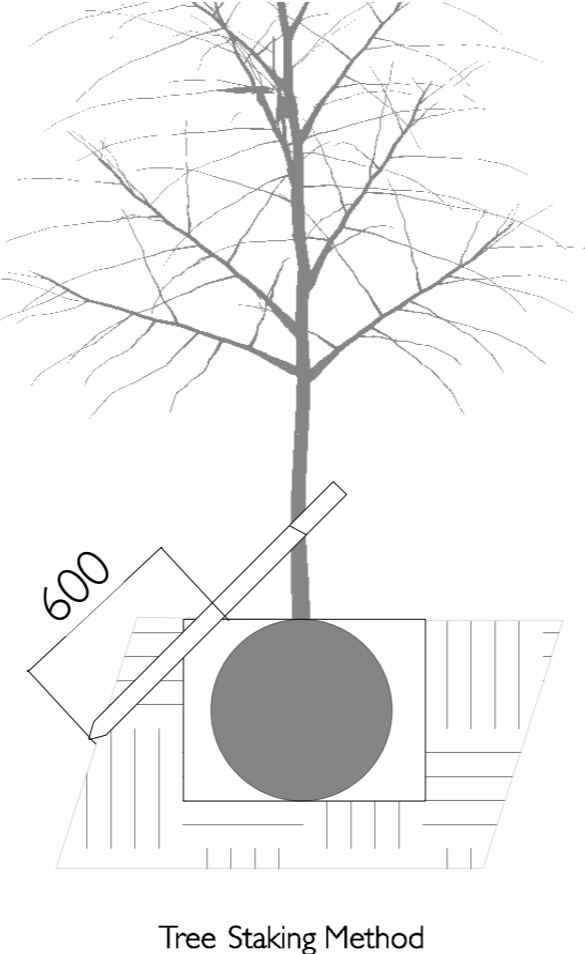
Prunus spinosa (Blackthorn), Sambucus nigra (Elder), Corylus avellana (Hazel), Euonymus europaeus (Spindle), Cornus sanguinea (Dogwood), Crataegus monogyna (Hawthorn) and Rosa canina (Dog Rose)

Stocking and composition of hedging should aim for presence of at least 5 species in each 30m length of hedgerow, to meet the criteria for a species rich hedgerow.

**Hedging Spacing ( 5 plants per metre)**



Latin Name	Scheduled Size	Quantity
33	33	2297
Pyrus calleryana 'Chanticleer'	8-10G	1
Prunus serrula Tibetica	2m Multi Stem	1
Sorbus aria Lutescens	8-10G	2
Gleditsia triacanthos Sunburst	8-10G	1
Acer platanoides Drummondii	8-10G	2
Rhus typhina	1.5m multistem	1
Amelanchier arborea 'Robin Hill'	8-10G	5
Pinus sylvestris	1.5m	12
Salix alba	8-10G	2
Quercus robur	8-10G	1
Prunus avium	8-10G	5
Populus tremula	8-10G	6
Tilia cordata	8-10G	6
Betula pendula	8-10G	8
Alnus glutinosa	8-10G	1
Cercis siliquastrum	8-10G	1
Carpinus betulus	8-10G	2
Malus domestica	8-10G	6
Corylus avellana	1.5m	6
Populus nigra	8-10G	3
Acer campestre	8-10G	6
Ligustrum vulgare	0.75 - 1m BR	797
Carpinus betulus (1m hedging)	0.75-1m BR	45
Native Hedge Mix (Blackthorn Based)	60-90cm BR	1350
Ilex aquifolium	1.5m	5
Parrotia persica 'Vanessa'	8-10G	1
Betula utilis var. jacquemontii	8-10G	12
Carpinus betulus 'Fastigiata'	8-10G	1
Eucalyptus niphophila	8-10G	1
Pyrus communis	8-10G	3
Juglans regia	8-10G	1
Sorbus aucuparia	8-10G	2
Liquidambar styraciflua Worpleston	8-10G	1



No.	Date	Appr	Revision Notes

**TRISTEN KNIGHT**  
GARDEN DESIGN CO.

Project Name: **Tristen Knight Garden Design Co**  
Abrams Lane  
Christhall  
SG8 8QD

Client: **New Development**  
Old School Lane  
Upware  
Cambs

Project Title: **Soft Landscaping Plan - Trees and Hedging Rev A**

Project Name: NA	Project ID: Upware
Drawn by: Tristen Knight	Scale: 1:200 @ A1
Approved by: NA	Sheet No: 3
Date: 26th Oct 2020	of 9
CAD File Name:	